



Designed by

AADF

Investor

Qendra e Vizitoreve_Drilon-Tushemisht

Projekti Elektrik

Interior Design

29.12.2025

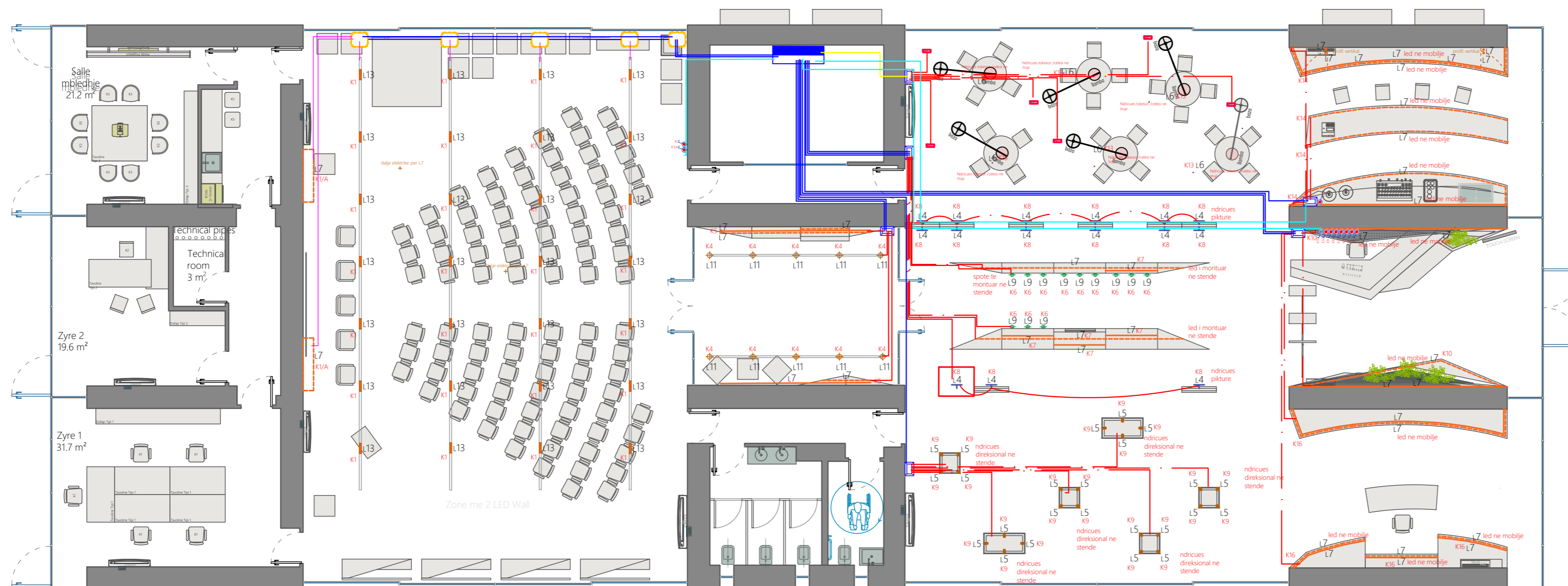
- 1)
- 2)
- 3)
- 4)

LEGJENDA

	Kuader Elektrik Kryesor
	Kabell 3 x1.5 ne tub fleksibel ne dysheme Ø 20
	Kabell 3 x1.5 ne tub Rigid Ø 20
	Kabell 3 x2.5 ne tub fleksibel Ø 25 ne dysheme
	Kabell 3 x4 ne tub fleksibel Ø 32
	Kabell komande 21 x1.5 ne tub fleksibel Ø 25
	Kabell 2 x2.5 ne tub fleksibel Ø 25
	Kabell S/FTP Cat 6 ne tub fleksibel Ø 25
	Kabell 3 x2.5 ne tub Rigid Ø 25
	Kabell 5 x4 ne tub Rigid Ø 25
	Kuti shperndarese Jashte muri C5
	Torreto 4M ne Dysheme
	Priza rrjeti RJ 45 Cat 6a
	Torreto 16M me 2 priza Shuko dhe 2 Priza RJ45
	Priz Shuko 1P+N +T 16A nen UPS
	Priz Shuko 1P+N +T 16A nen Rrjet
	Celes 1 polar 220V 10 A
	Celes deviat 220V 10 A
	Kuti shperndarese PT 7
	Dalje elektrike



Plani Ndricimit
Dysheme



- 1)
- 2)
- 3)
- 4)

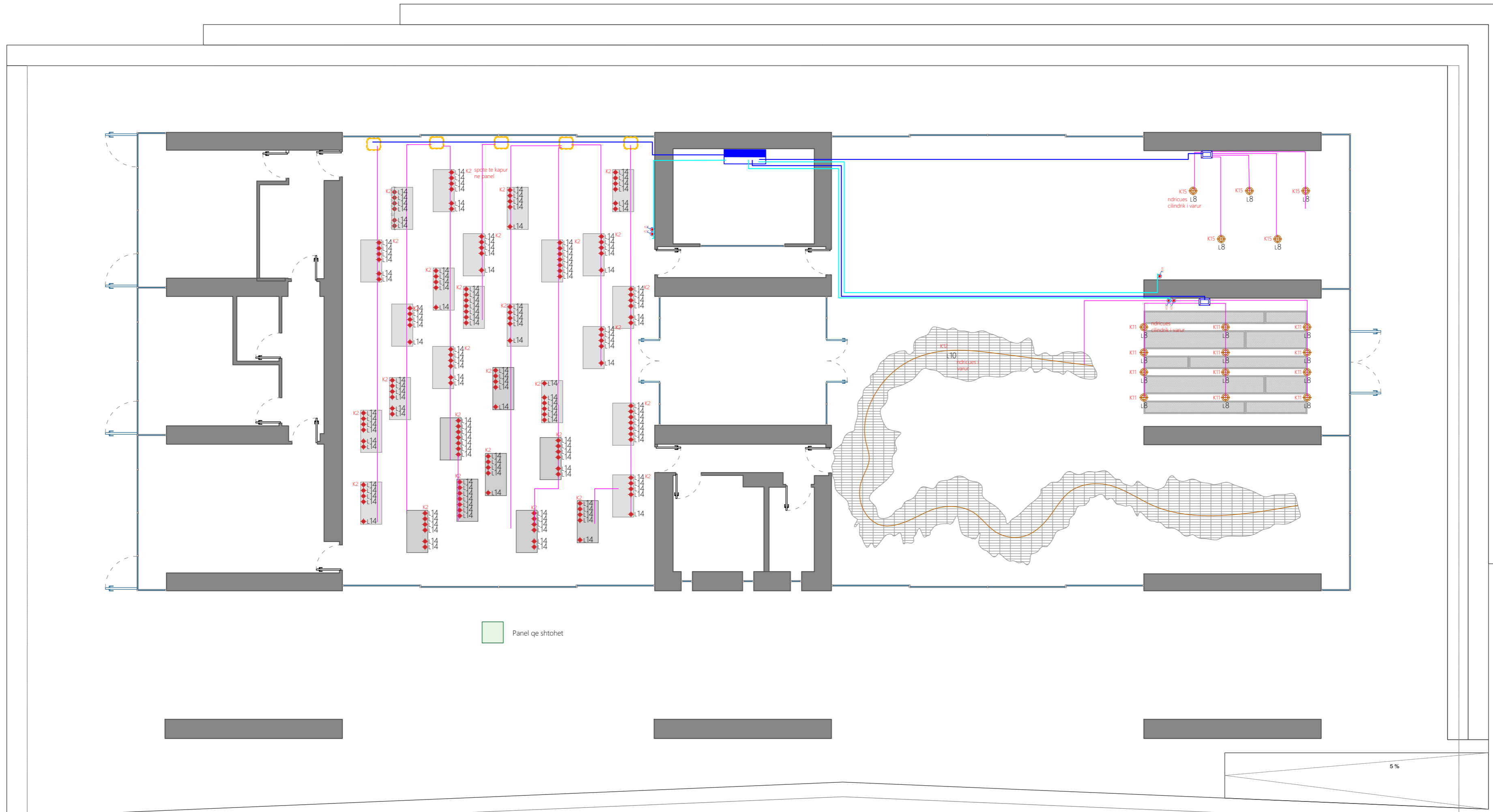
LEGJENDA

	Kuader Elektrik Kryesor
	Kabell 3 x1.5 ne tub fleksibel ne dysheme Ø 20
	Kabell 3 x1.5 ne tub Rigid Ø 20
	Kabell 3 x2.5 ne tub fleksibel Ø 25 ne dysheme
	Kabell 3 x4 ne tub fleksibel Ø 32
	Kabell komande 21 x1.5 ne tub fleksibel Ø 25
	Kabell 2 x2.5 ne tub fleksibel Ø 25
	Kabell S/FTP Cat 6 ne tub fleksibel Ø 25
	Kabell 3 x2.5 ne tub Rigid Ø 25
	Kabell 5 x4 ne tub Rigid Ø 25
	Kuti shperndarese Jashte muri C5
	Torroto 4M ne Dysheme
	Priza rrjeti RJ 45 Cat 6a
	Torroto 16M me 2 priza Shuko dhe 2 Priza RJ45
	Priz Shuko 1P+N +T 16A nen UPS
	Priz Shuko 1P+N +T 16A nen Rrjet
	Celes 1 polar 220V 10 A
	Celes deviat 220V 10 A
	Kuti shperndarese PT 7
	Dalje elektrike



Plani Ndrimit Tavanit

5.02

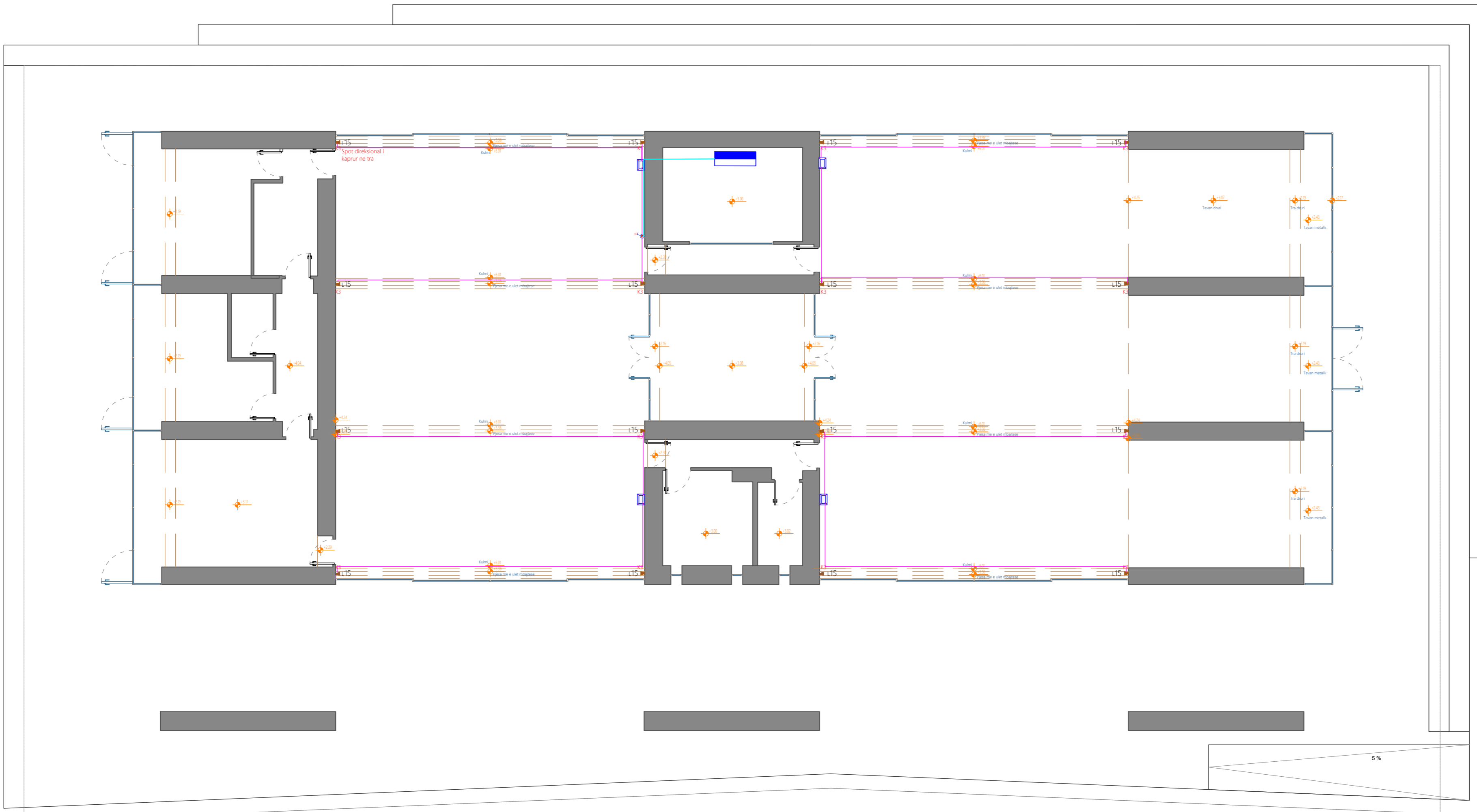


Panel qe shtohet

- 1)
- 2)
- 3)
- 4)

LEGJENDA

	Kuader Elektrik Kryesor
	Kabell 3 x1.5 ne tub fleksibel ne dysheme Ø 20
	Kabell 3 x1.5 ne tub Rigid Ø 20
	Kabell 3 x2.5 ne tub fleksibel Ø 25 ne dysheme
	Kabell 3 x4 ne tub fleksibel Ø 32
	Kabell komande 21 x1.5 ne tub fleksibel Ø 25
	Kabell 2 x2.5 ne tub fleksibel Ø 25
	Kabell S/FTP Cat 6 ne tub fleksibel Ø 25
	Kabell 3 x2.5 ne tub Rigid Ø 25
	Kabell 5 x4 ne tub Rigid Ø 25
	Kuti shperndarese Jashte muri C5
	Torreto 4M ne Dysheme
	Priza rrjeti RJ 45 Cat 6a
	Torreto 16M me 2 priza Shuko dhe 2 Priza RJ45
	Priz Shuko 1P+N +T 16A nen UPS
	Priz Shuko 1P+N +T 16A nen Rrjet
	Celes 1 polar 220V 10 A
	Celes deviat 220V 10 A
	Kuti shperndarese PT 7
	Dalje elektrike



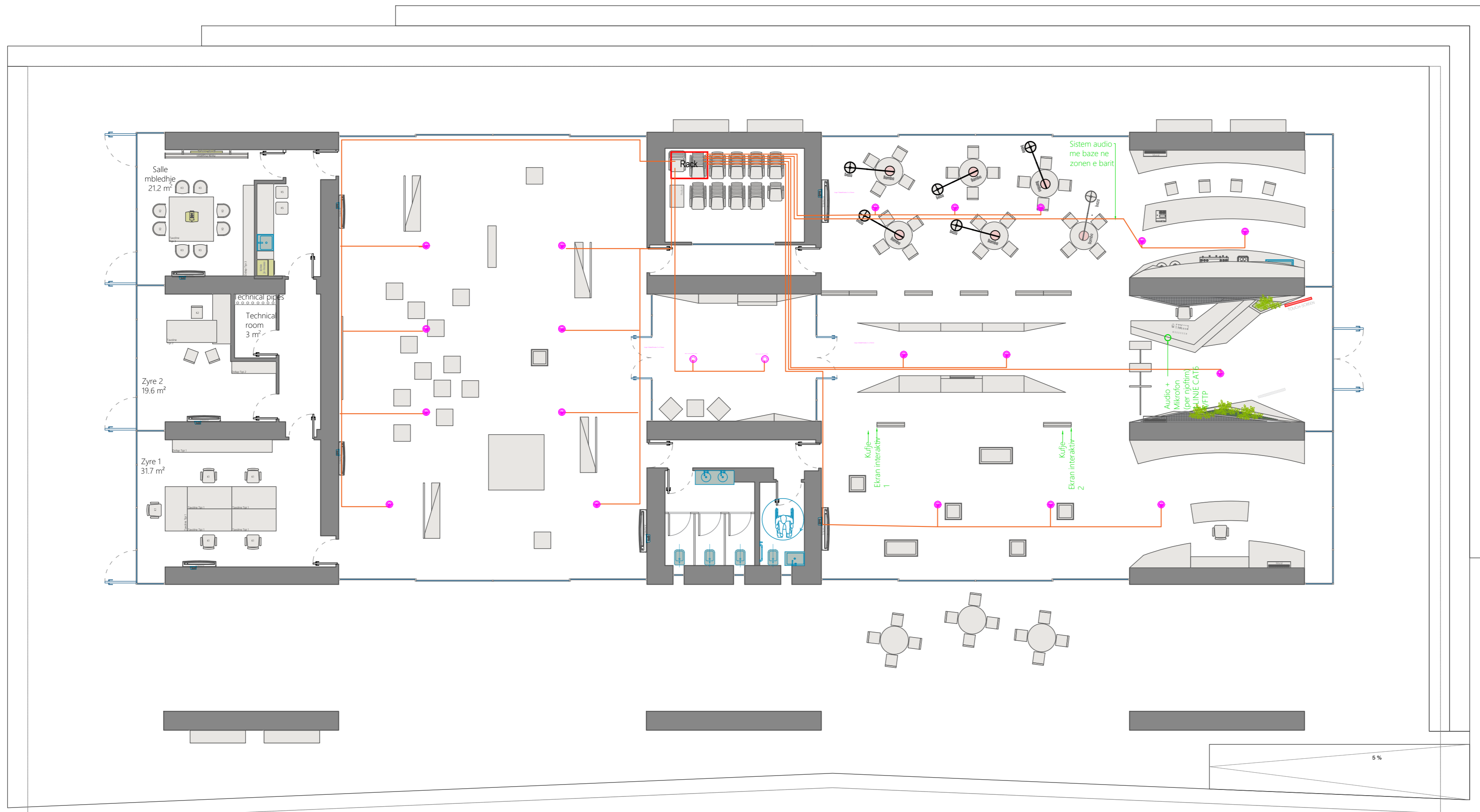
- 1)
- 2)
- 3)
- 4)

LEGJENDA

	Kuader Elektrik Kryesor
	Kabell 3 x1.5 ne tub fleksibel ne dysheme Ø 20
	Kabell 3 x1.5 ne tub Rigid Ø 20
	Kabell 3 x2.5 ne tub fleksibel Ø 25 ne dysheme
	Kabell 3 x4 ne tub fleksibel Ø 32
	Kabell komande 21 x1.5 ne tub fleksibel Ø 25
	Kabell 2 x2.5 ne tub fleksibel Ø 25
	Kabell S/FTP Cat 6 ne tub fleksibel Ø 25
	Kabell 3 x2.5 ne tub Rigid Ø 25
	Kabell 5 x4 ne tub Rigid Ø 25
	Kuti shperndarese Jashte muri C5
	Torreto 4M ne Dysheme
	Priza rrjeti RJ 45 Cat 6a
	Torreto 16M me 2 priza Shuko dhe 2 Priza RJ45
	Priz Shuko 1P+N +T 16A nen UPS
	Priz Shuko 1P+N +T 16A nen Rrjet
	Celes 1 polar 220V 10 A
	Celes deviat 220V 10 A
	Kuti shperndarese PT 7
	Dalje elektrike



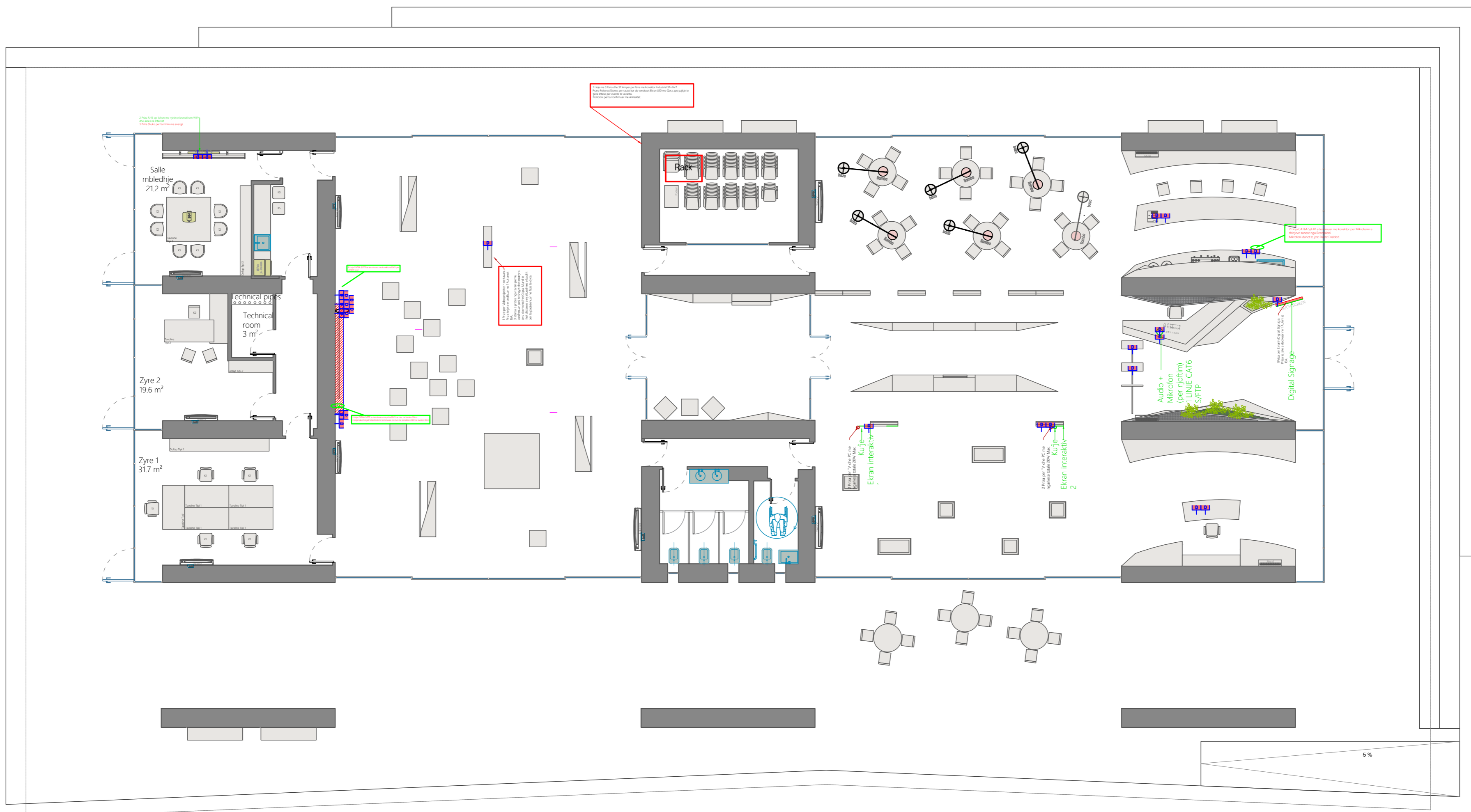
Sistemi Audio



- 1)
- 2)
- 3)
- 4)

LEGJENDA

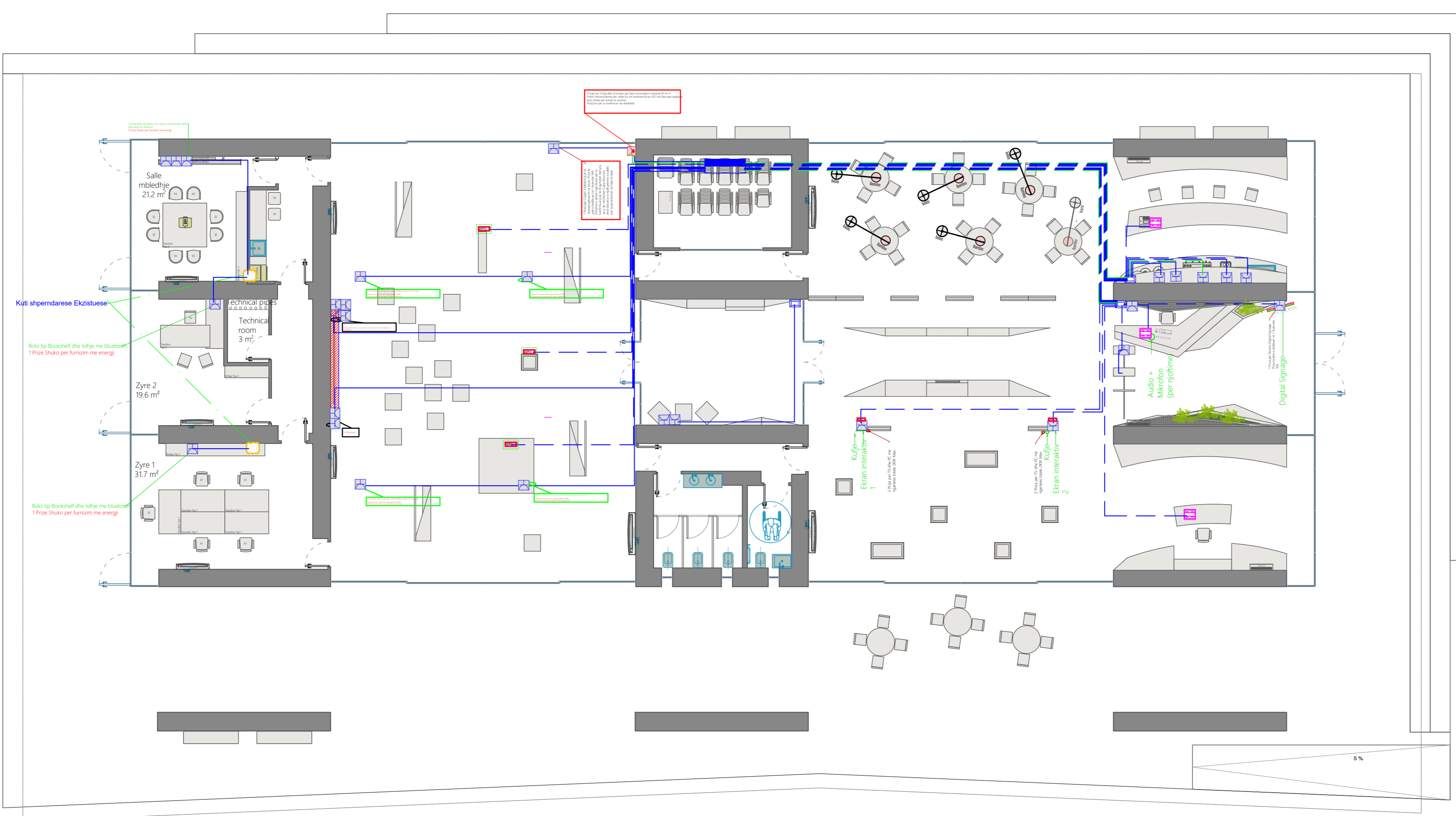
	Kuader Elektrik Kryesor
	Kabell 3 x1.5 ne tub fleksibel ne dysHEME Ø 20
	Kabell 3 x1.5 ne tub Rigid Ø 20
	Kabell 3 x2.5 ne tub fleksibel Ø 25 ne dysHEME
	Kabell 3 x4 ne tub fleksibel Ø 32
	Kabell komande 21 x1.5 ne tub fleksibel Ø 25
	Kabell 2 x2.5 ne tub fleksibel Ø 25
	Kabell S/FTP Cat 6 ne tub fleksibel Ø 25
	Kabell 3 x2.5 ne tub Rigid Ø 25
	Kabell 5 x4 ne tub Rigid Ø 25
	Kuti shperndarese Jashte muri C5
	Torroto 4M ne DysHEME
	Priza rrjeti RJ 45 Cat 6a
	Torroto 16M me 2 priza Shuko dhe 2 Priza RJ45
	Priz Shuko 1P+N+T 16A nen UPS
	Priz Shuko 1P+N+T 16A nen Rrjet
	Celes 1 polar 220V 10 A
	Celes deviat 220V 10 A
	Kuti shperndarese PT 7
	Dalje elektrike



- 1)
- 2)
- 3)
- 4)

LEGJENDA

	Kuader Elektrik Kryesor
	Kabell 3 x1.5 ne tub fleksibel ne dysheme Ø 20
	Kabell 3 x1.5 ne tub Rigid Ø 20
	Kabell 3 x2.5 ne tub fleksibel Ø 25 ne dysheme
	Kabell 3 x4 ne tub fleksibel Ø 32
	Kabell komande 21 x1.5 ne tub fleksibel Ø 25
	Kabell 2 x2.5 ne tub fleksibel Ø 25
	Kabell S/FTP Cat 6 ne tub fleksibel Ø 25
	Kabell 3 x2.5 ne tub Rigid Ø 25
	Kabell 5 x4 ne tub Rigid Ø 25
	Kuti shperndarese Jashte muri C5
	Torreto 4M ne Dysheme
	Priza rrjeti RJ 45 Cat 6a
	Torreto 16M me 2 priza Shuko dhe 2 Priza RJ45
	Priz Shuko 1P+N +T 16A nen UPS
	Priz Shuko 1P+N +T 16A nen Rrjet
	Celes 1 polar 220V 10 A
	Celes deviat 220V 10 A
	Kuti shperndarese PT 7
	Dalje elektrike



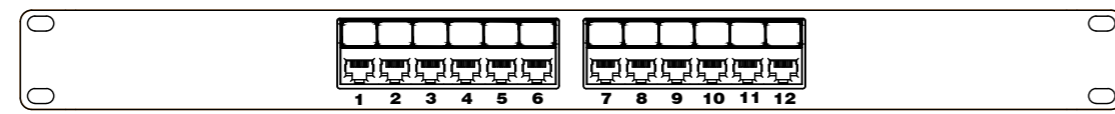
- 1)
- 2)
- 3)
- 4)

LEGJENDA

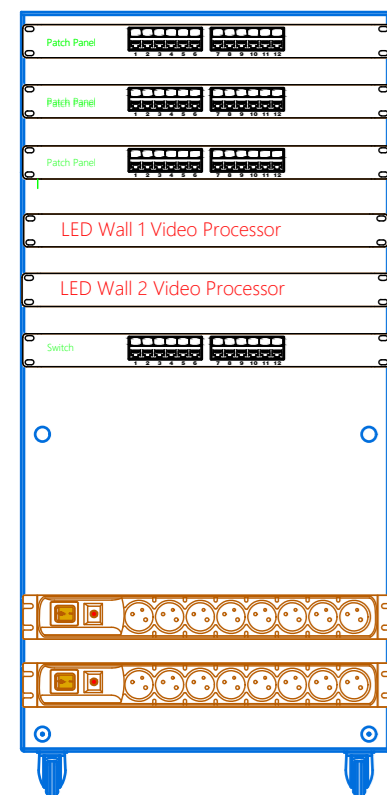
	Kuader Elektrik Kryesor
	Kabell 3 x1.5 ne tub fleksibel ne dysHEME Ø 20
	Kabell 3 x1.5 ne tub Rigid Ø 20
	Kabell 3 x2.5 ne tub fleksibel Ø 25 ne dysHEME
	Kabell 3 x4 ne tub fleksibel Ø 32
	Kabell komande 21 x1.5 ne tub fleksibel Ø 25
	Kabell 2 x2.5 ne tub fleksibel Ø 25
	Kabell S/FTP Cat 6 ne tub fleksibel Ø 25
	Kabell 3 x2.5 ne tub Rigid Ø 25
	Kabell 5 x4 ne tub Rigid Ø 25
	Kuti shperndarese Jashte muri C5
	Torreto 4M ne DysHEME
	Priza rrjeti RJ 45 Cat 6a
	Torreto 16M me 2 priza Shuko dhe 2 Priza RJ45
	Priz Shuko 1P+N +T 16A nen UPS
	Priz Shuko 1P+N +T 16A nen Rrjet
	Celes 1 polar 220V 10 A
	Celes deviat 220V 10 A
	Kuti shperndarese PT 7
	Dalje elektrike



ROUTER Kryesor i godines qe menaxhon internetin dhe rrjetin wireless.

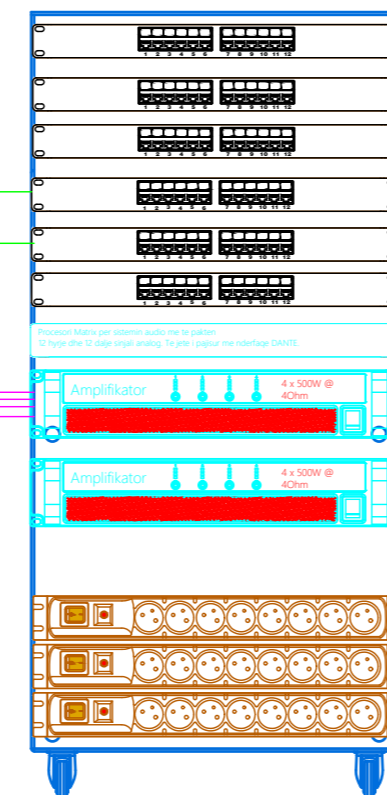


Rack per pajisjet e VIDEO WALL & Display Interaktiv



- Patch Panel 12 x RJ45 CAT6A
- Patch Panel 12 x RJ45 CAT6A
- Patch Panel 12 x RJ45 CAT6A
- LED Wall 1 Video Processor
- LED Wall 2 Video Processor
- Switch
- Switch rrjeti i menaxhueshem me te pakten 12 Porta RJ45

Rack per sistemin Audio



- Patch panel 12 x RJ45 CAT6A i tokezuar
- Patch panel 12 x RJ45 CAT6A i tokezuar
- Patch panel 12 x RJ45 CAT6A i tokezuar
- Switch rrjeti i menaxhueshem me te pakten 8 Porta RJ45 dhe POE
- Switch rrjeti i menaxhueshem me te pakten 8 Porta RJ45 dhe POE
- Switch rrjeti i menaxhueshem me te pakten 8 Porta RJ45 dhe POE
- Procesori i sistemit audio me te pakten 12 zona & nderfaqe DANTE

Linja 1

Linja 2

Linja 3

Linja 4

Linja 7

Linja 8

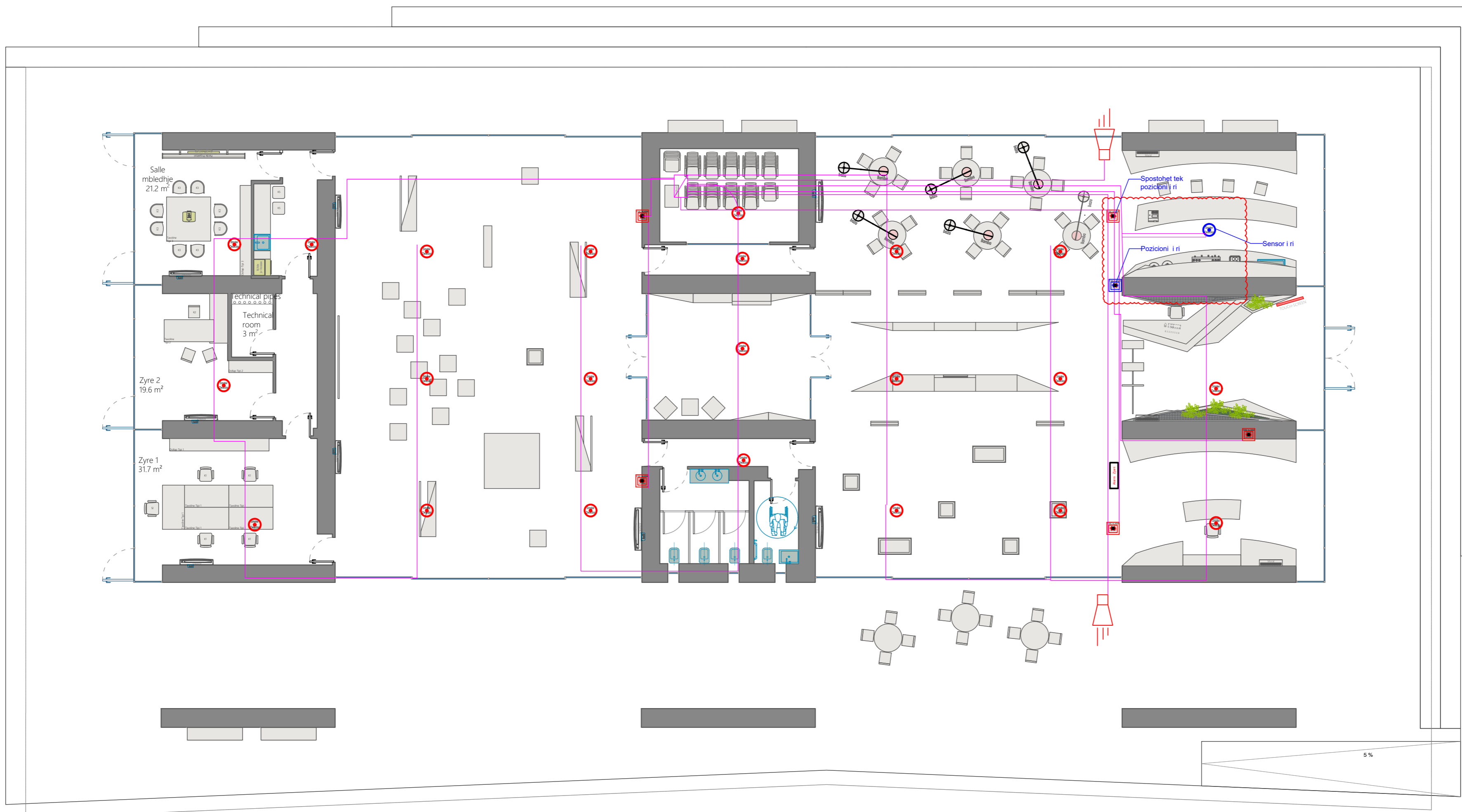
Linja 5

Linja 6

- 1)
- 2)
- 3)
- 4)

LEGJENDA

	Kuader Elektrik Kryesor
	Kabell 3 x1.5 ne tub fleksibel ne dysheme Ø 20
	Kabell 3 x1.5 ne tub Rigid Ø 20
	Kabell 3 x2.5 ne tub fleksibel Ø 25 ne dysheme
	Kabell 3 x4 ne tub fleksibel Ø 32
	Kabell komande 21 x1.5 ne tub fleksibel Ø 25
	Kabell 2 x2.5 ne tub fleksibel Ø 25
	Kabell S/FTP Cat 6 ne tub fleksibel Ø 25
	Kabell 3 x2.5 ne tub Rigid Ø 25
	Kabell 5 x4 ne tub Rigid Ø 25
	Kuti shperndarese Jashte muri C5
	Torreto 4M ne Dysheme
	Priza rrjeti RJ 45 Cat 6a
	Torreto 16M me 2 priza Shuko dhe 2 Priza RJ45
	Priz Shuko 1P+N +T 16A nen UPS
	Priz Shuko 1P+N +T 16A nen Rrjet
	Celes 1 polar 220V 10 A
	Celes deviat 220V 10 A
	Kuti shperndarese PT 7
	Dalje elektrike



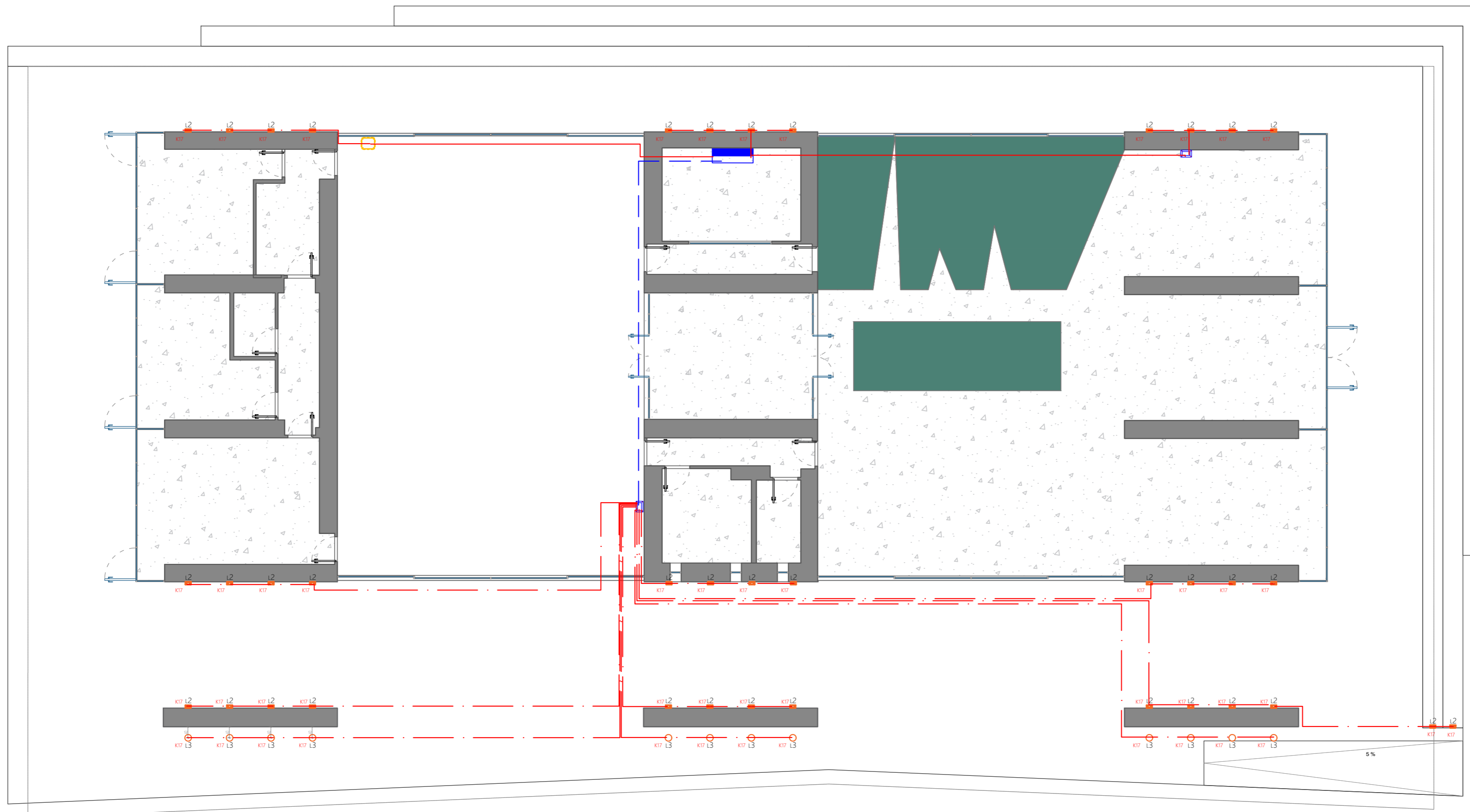
- 1)
- 2)
- 3)
- 4)

LEGJENDA

	Kuader Elektrik Kryesor
	Kabell 3 x1.5 ne tub fleksibel ne dysheme Ø 20
	Kabell 3 x1.5 ne tub Rigid Ø 20
	Kabell 3 x2.5 ne tub fleksibel Ø 25 ne dysheme
	Kabell 3 x4 ne tub fleksibel Ø 32
	Kabell komande 21 x1.5 ne tub fleksibel Ø 25
	Kabell 2 x2.5 ne tub fleksibel Ø 25
	Kabell S/FTP Cat 6 ne tub fleksibel Ø 25
	Kabell 3 x2.5 ne tub Rigid Ø 25
	Kabell 5 x4 ne tub Rigid Ø 25
	Kuti shperndarese Jashte muri C5
	Torroto 4M ne Dysheme
	Priza rrjeti RJ 45 Cat 6a
	Torroto 16M me 2 priza Shuko dhe 2 Priza RJ45
	Priz Shuko 1P+N +T 16A nen UPS
	Priz Shuko 1P+N +T 16A nen Rrjet
	Celes 1 polar 220V 10 A
	Celes deviat 220V 10 A
	Kuti shperndarese PT 7
	Dalje elektrike



Plani Ndricimi i Jashtem Dyshemeja



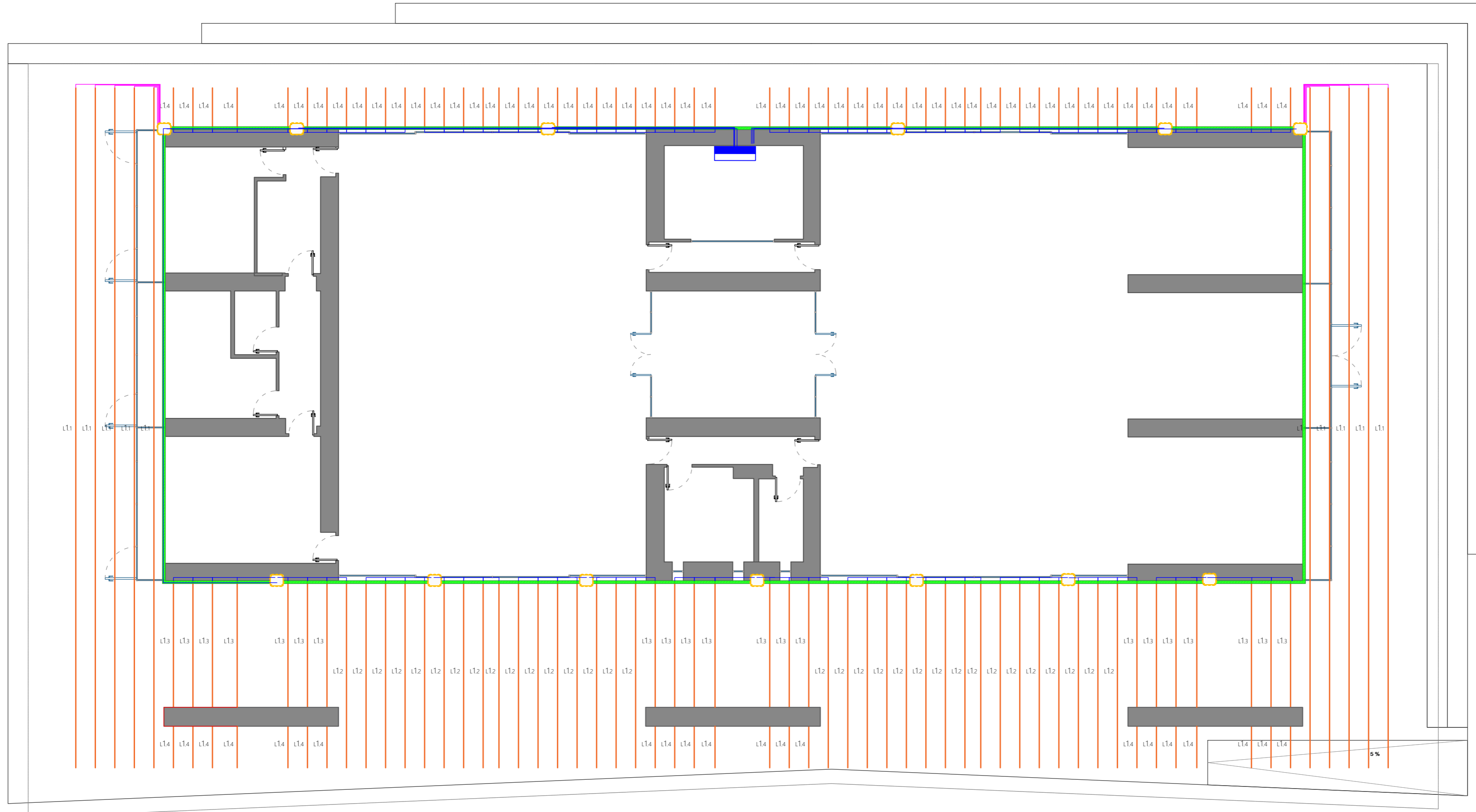
- 1)
- 2)
- 3)
- 4)

LEGJENDA

	Kuader Elektrik Kryesor
	Kabell 3 x1.5 ne tub fleksibel ne dysheme Ø 20
	Kabell 3 x1.5 ne tub Rigid Ø 20
	Kabell 3 x2.5 ne tub fleksibel Ø 25 ne dysheme
	Kabell 3 x4 ne tub fleksibel Ø 32
	Kabell komande 21 x1.5 ne tub fleksibel Ø 25
	Kabell 2 x2.5 ne tub fleksibel Ø 25
	Kabell 2 x 1.5 ne tub fleksibel
	Kabell S/FTP Cat 6 ne tub fleksibel Ø 25
	Kabell 3 x2.5 ne tub Rigid Ø 25
	Kabell 5 x4 ne tub Rigid Ø 25
	Kuli shperndarese Jashte muri C5
	Torreto 4M ne Dysheme
	Priza rjeti RJ 45 Cat 6a
	Torreto 16M me 2 priza Shuko dhe 2 Priza RJ45
	Priz Shuko 1P+N +T 16A nen UPS
	Priz Shuko 1P+N +T 16A nen Rrjet
	Celes 1 polar 220V 10 A
	Celes deviat 220V 10 A
	Kuli shperndarese PT 7
	Kanaline Plastike 100x60
	Dajje elektrike



**Plani Ndricimi i
Jashtem Tavani**



- 1)
- 2)
- 3)
- 4)



KE

